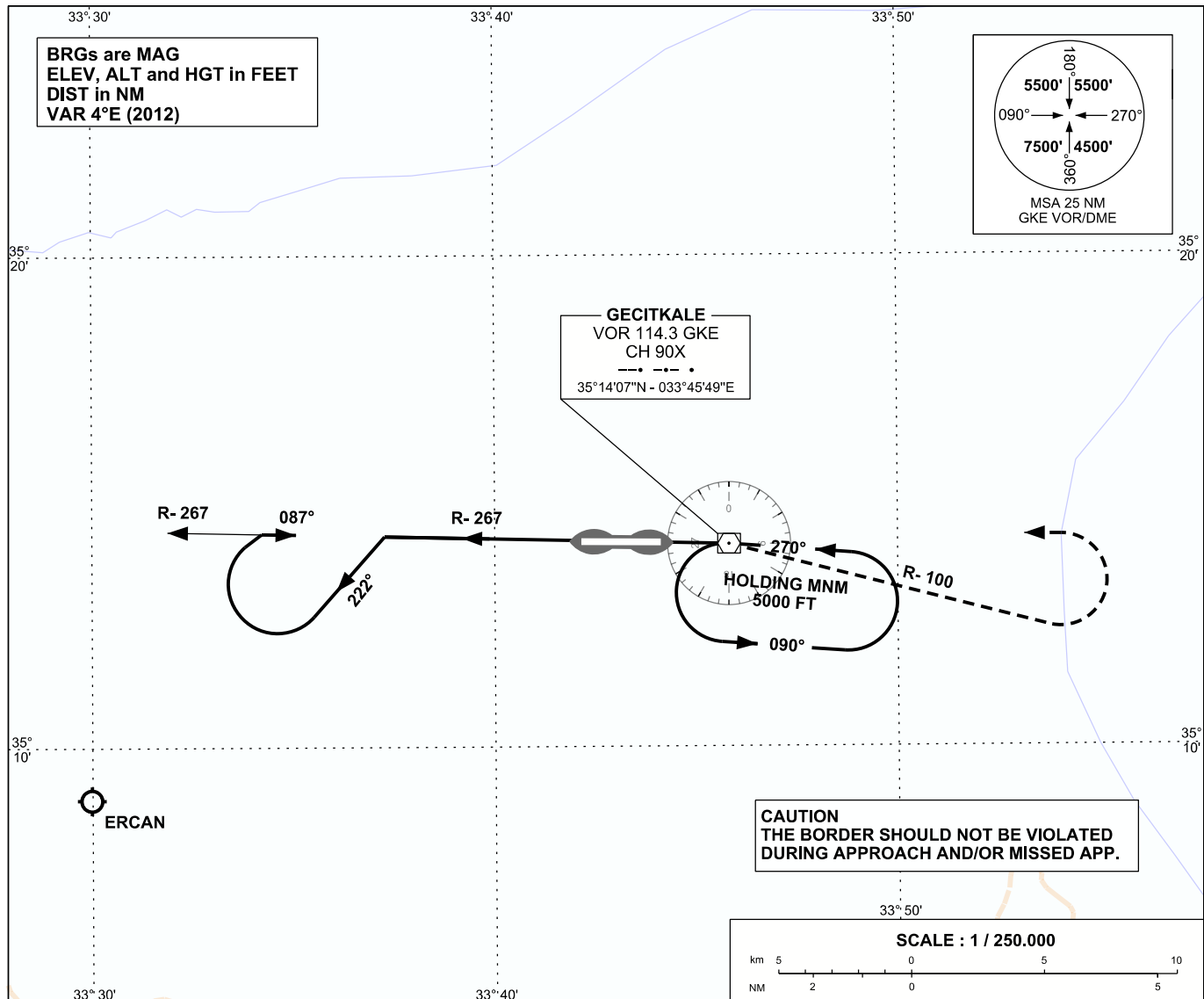


GAZİMAGUSA/  
GEÇİTKALE  
VOR/DME RWY 09

APP	127.750	AD ELEV	143 FT
TWR	120.375	TRANSITION ALTITUDE 6000 FT	
ATIS	118.350		

INSTRUMENT  
APPROACH  
CHART - ICAO



**MISSED APPROACH**  
CLIMB TO 2000 FT ON R- 100  
THEN LEFT CLIMBING TO 5000 FT  
PROCEED TO VOR/DME AND HOLD

